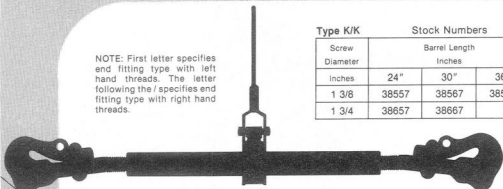




River Ratchets

NOTE: First letter specifies end fitting type with left hand threads. The letter following the / specifies end fitting type with right hand threads.

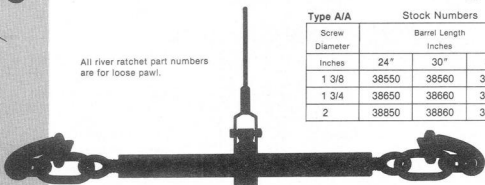


Type K/K

Stock Numbers

Screw Diameter	Barrel Length		
	Inches		
Inches	24"	30"	36"
1 3/8	38557	38567	38577
1 3/4	38657	38667	

All river ratchet part numbers are for loose pawl.



Type A/A

Stock Numbers

Screw Diameter	Barrel Length		
	Inches		
Inches	24"	30"	36"
1 3/8	38550	38560	38570
1 3/4	38650	38660	38670
2	38850	38860	38870

Type K/F **Stock Numbers**

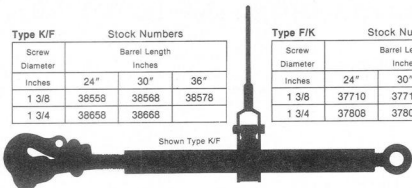
Screw Diameter	Barrel Length		
	Inches		
Inches	24"	30"	36"
1 3/8	38558	38568	38578
1 3/4	38658	38668	

Type F/K

Stock Numbers

Screw Diameter	Barrel Length		
	Inches		
Inches	24"	30"	36"
1 3/8	37710	37714	37715
1 3/4	37808	37809	37810

Shown Type K/F



Type A/F **Stock Numbers**

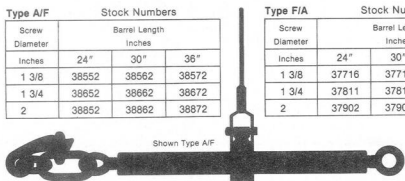
Screw Diameter	Barrel Length		
	Inches		
Inches	24"	30"	36"
1 3/8	38552	38562	38572
1 3/4	38652	38662	38672
2	38852	38862	38872

Type F/A

Stock Numbers

Screw Diameter	Barrel Length		
	Inches		
Inches	24"	30"	36"
1 3/8	37716	37717	37718
1 3/4	37811	37812	37813
2	37902	37903	37904

Shown Type A/F

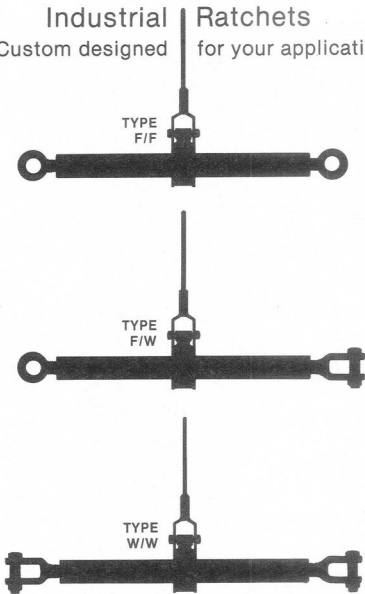


Other length/size combinations are available upon request.



Industrial Ratchets

Custom designed for your application



Every Dixie product is made by skilled craftsmen, using the most modern equipment and technology available. For over 70 years, Dixie has improved methods and machines to provide industry the highest quality product available.

All of Dixie's barrels are upset-forged from high strength steel. This technology provides the user with maximum strength and resistance to side-loading. Dixie uses only the highest quality closed die forgings for end fittings.

Our ratchet gears provide years of trouble free service.

Stringent quality control, from hot inspection at the forging machines to final assembly,

assures our customers of the highest quality products.

Eyebolts and barrels are Acme threaded with the proper pitch to provide the ultimate trade-off between take-up tension and speed operation.

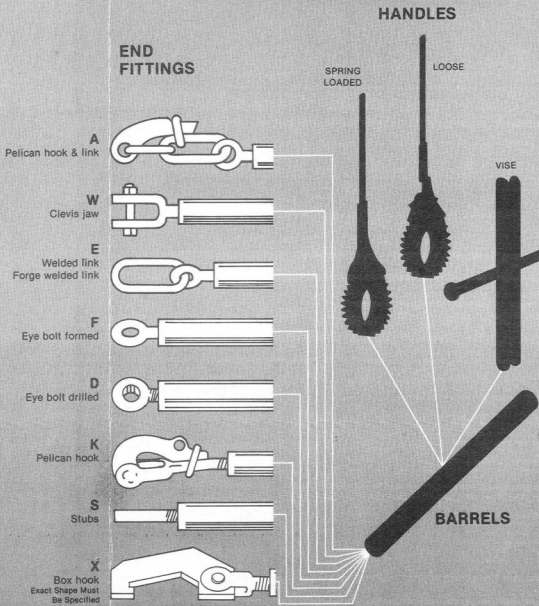
The links are made from high carbon steel and are electrically welded.

The pelican hooks are welded in the jaws so they cannot come out.

The double acting pawls are spring loaded so that the ratcheting can be done at any angle. The loose pawl design works by gravity and is thus most effective when the handle is in the nearly vertical position.



SPECIFIC RATCHETS FOR SPECIFIC NEEDS



1

CHOOSE THE BARREL DIAMETER AND SCREW SIZE TO SUIT YOUR NEEDS.

2

SPECIFY THE BARREL LENGTH AS DETERMINED BY AMOUNT OF TAKE-UP REQUIRED. Barrel length = Required take-up plus 2 times the screw diameter. In general 18" to 36" in 6" increments are standard but other lengths can be supplied upon request.

3

PICK THE END FITTINGS FOR EACH END (left and right) TO BEST SUIT YOUR APPLICATION.

4

SELECT HANDLE TYPE

5

CALL AND PLACE ORDER.



Dimensions for every need

EYEBOLTS FORMED

for use with chain or wire rope



Shank Diameter	Thickness	Outside Diameter	Size of Pin That Eyebolt Will Fit
1	3/4	2 1/2	1
1 3/8	1 1/8	3 1/2	1 1/4
1 3/4	1 1/4	4	1 1/2
2	1 5/16	4 1/4	1 5/8

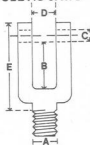
EYEBOLTS DRILLED

for use with pins



Shank Diameter	Thickness	Outside Diameter	Maximum Inside Diameter of Drilled Hole
1	1	2 1/4	1 3/16
1 3/8	1 3/8	3 1/4	1 3/4
1 3/4	1 3/4	3 3/4	2
2	2	4	2 1/4

Actual hole size must be specified. If hole is 1" or less increments of 1/32" are desirable. If the hole size is larger than 1" the standard increment is 1/8"

CLEVIS JAWS


Size	Shank Diameter	Throat To Hole	Bolt Size	Throat Opening	End of Eye To Last Thread
	A	B	C	D	E
1	1	2 1/16	15/16	1 3/16	5 1/2
1 3/8	1 3/8	1 1/8	1 1/16	1 1/4	3
1 3/4	1 3/4	3 3/8	1 11/16	2 3/8	9 3/8
2	2	3 3/4	2 1/16	2 1/2	11 7/8

HANDLES

Screw Size (Inches)	Standard Handle Length (Inches)
1	14
1 3/8	22
1 3/4	22
1 3/4	22
2	22

BARRELS

Screw Diameter (Inches)	Barrel Pipe O.D. & Wall Thickness (Inches)	Breaking Strength (Pounds)
1	1 1/2 x .156	40,000
1 3/8	2 3/8 x .218	85,000
1 3/4	2 7/8 x .203	95,000
1 3/4	2 7/8 x .276	126,000
2	2 7/8 x .276	126,000